

MELBOURNE 6 (UMEL-60052)**Product description**

8.5" Diameter | Discreet | Flush In-Ground
Outdoor Light
120-277v Input Voltage
Up to 2,008 Lumen Output
RGBW – Unlimited Possibilities of Color
Scenes / Color Transitions through a DMX
Controller (Stick-DE3 Sold Separately)
Externally adjustable tilt up to 25° along with
360° rotation
Wide Optical Pattern

**Luminaire Structure**

- | | | |
|---|---|--|
| <ul style="list-style-type: none"> - Die-cast stainless steel in grade 316 - Body is pre-treated before powder coating ensuring high corrosion resistance - Front ring in grade 316 stainless steel - Externally adjustable: Tilt 25°, Rotation 360° for UMEL-60051, UMEL-60052, UMEL-60053, UMEL-60061, UMEL-60062, UMEL-60063 - Single cable entry, through wiring upon request - One cable gland supplied with 2.5ft outdoor cable | <ul style="list-style-type: none"> - Stainless steel fasteners in grade 316 - Durable silicone rubber gasket - High-efficiency PMMA lens - Clear, .59" thick, toughened glass - Recessing box in high-density polyethylene is included - Suitable for drive-over with a maximum load of 11,000LBS | <ul style="list-style-type: none"> - Vehicles with pneumatic tires can drive over the luminaire but the speed must not exceed 31 mph - Load is transferred by the housing to the foundation - One glass suction cup for easy installation is included in each item list on the order - The distance between the luminaire and the illuminated surface should be at least 1.6ft |
|---|---|--|

Optic

W

Product color

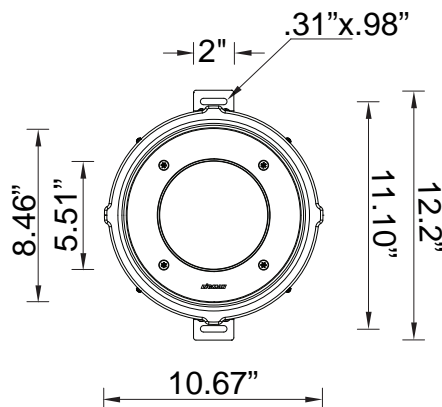
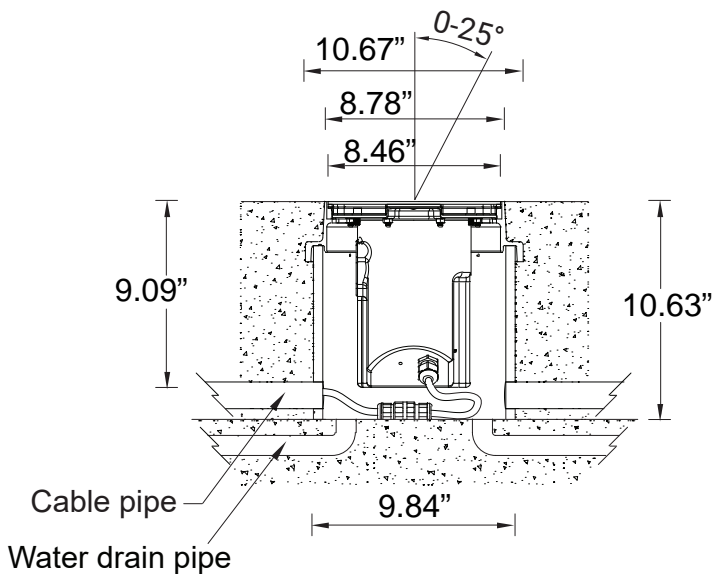
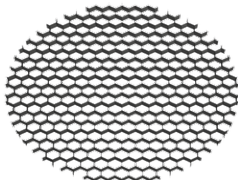
00 - Stainless Steel

MELBOURNE 6 (UMEL-60052)**Technical information**

Material	Stainless Steel
Light source	1 LED
Power	11 W
Lumen	313 - 395 lm
Efficacy	28 - 36 lm/W
Driver option	Integral control gear
Driver	Constant current (CC)

Input voltage	120-277V 50/60Hz
Optic	N, W
Optic value	12°, 37°
CCT / CRI	RGBW30, RGBW40
Bug	B0-U3-G0
ULR	100
ULOR	100

Dimming type	DMX, DMX/RDM
Product colours	Stainless Steel
Weight	24.25lbs
Cable	Supplied with 2.5ft of Outdoor Submersible Cable
Through wiring	Single cable entry, through wiring upon request

**Accessories**

Honeycomb louvre
A62421



Anti slip glass
A62112



Glass suction cup
A614491

Please contact the factory for technical details if you wish to use Anti-glare accessories, Colour filters, Lenses and slip glasses in combination.